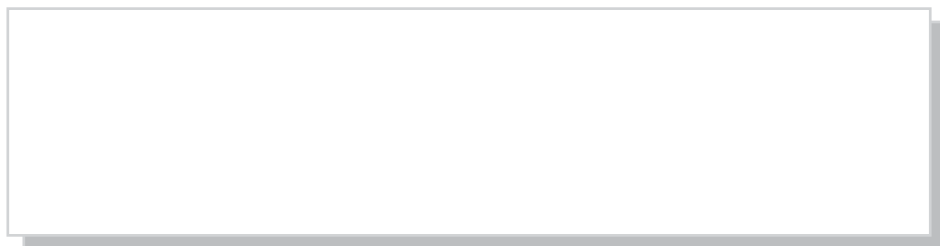


**The tractel Group has successfully established itself directly in 15 countries on 4 continents and is active in 80 other countries through its agents, importers and distributors.**  
**The main manufacturing plants are in France, Germany and Luxembourg.**

**Since 30 years, the Tractel Group's strategy is based on the magical triangle :**

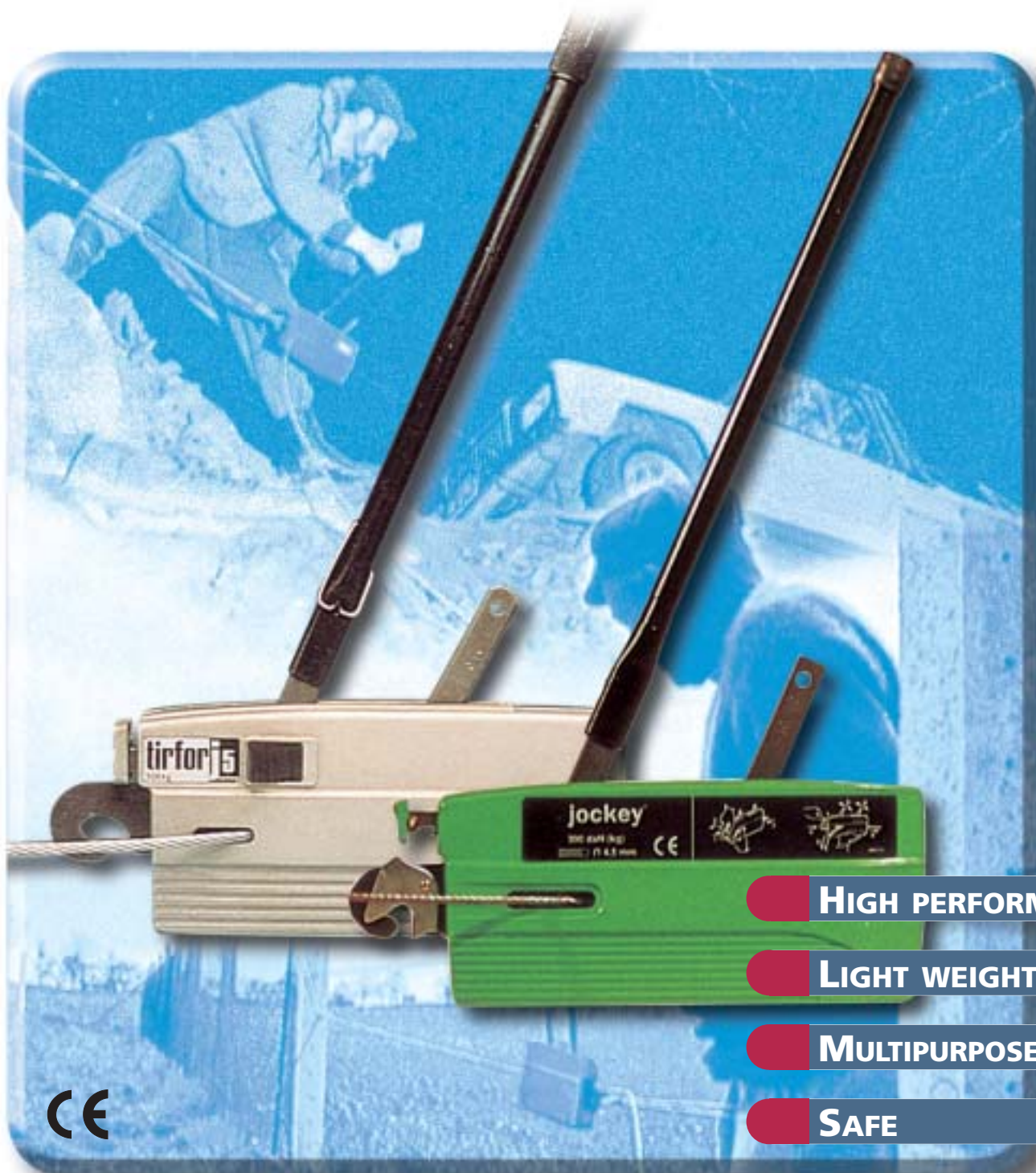
- **Technical innovation,**
  - **Costs control,**
  - **Worldwide marketing analysis,**
- with the product inside the heart of this triangle.**



Bretteville Taljer & Maskiner AS  
Griniveien 159  
N-1359 Eiksmarka  
Tlf: +47 67 16 69 90 Fax: +47 67 16 68 11  
[www.brettevilletaljer.no](http://www.brettevilletaljer.no) e-mail: [post@brettevilletaljer.no](mailto:post@brettevilletaljer.no)

# jockey®

winch with an unlimited length of rope



 **Tractel** Group

# jockey<sup>®</sup>j3

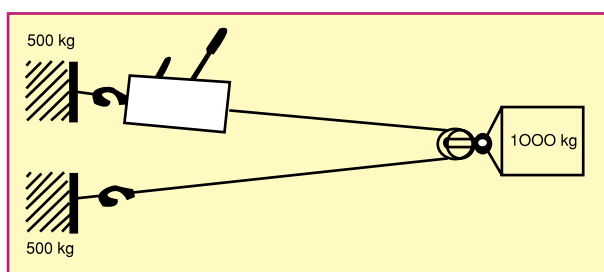
The JOCKEY range is an all-purpose lifting and pulling machine.

A safe and robust unit, it is easy to use and maintain and will help on many occasion to perform your pulling, lifting and positioning operations, eq.

## APPLICATIONS

Designed for use by professional, industrial and private users, the JOCKEY range is particularly useful in the following applications :

- **Prefabricated structures** : installation of columns, lifting of beams, assembly and adjustment of frames and prefabricated structures, etc
- **Steelwork, boilerwork** : lifting, erection, assembly and adjustment of pipes, etc.
- **Transports** : loading and unloading of machines, furnitures, etc., load binding of bulky freight.
- **Factories and workshops** : handling and servicing of machines, etc.
- **Vehicles** : debuggng cars, lifting and installing of engines as part of the vehicle's repair kit, etc.
- **Agriculture and forestry** : oading timber, shrub clearance, tightening fences, pulling out stumps, etc.
- **Leisure activities** : launching or beaching small craft, mountaineering or mountain rescue, positioning on debuggng caravans, as rally car equipment, etc.



In **jockey 5** version :

The two parts pulley arrangement, anchored to load, **allows double lifting or pulling capacity.**



**jockey 3**



**jockey 5**



jockey<sup>®</sup> J5

## PRINCIPLE OF THE JOCKEY 3/5

Its principle is simple. The wire rope is pulled straight through the mechanism, using two jaw-blocks which lock onto the wire rope and pull it but without damaging it.

**The jaw-blocks are self-clamping: the heavier the load, the firmer the grip.**

Moving the operating lever closes the jaw-blocks alternately on the rope. Each jaw-block is designed to take the whole load and the opening of one closes the other, **ensuring complete operating safety.**

As soon as the lever is stopped the force due to the load is **divided automatically** between the two blocks and the load is held perfectly safe.

Change-over from forward to reverse movement is done instantaneously **by simply transferring the operating handle from one lever to the other.**

## ADVANTAGES

**Light and compact**, the JOCKEY range can operate in any direction with an unlimited length of rope.

Used for lifting either **as a winch or hoist** the JOCKEY range continuously **holds the load both when lifting or lowering, with complete accuracy.**

When the equipment is not being used, the rope can be removed and coiled separately, **to facilitate handling and use.** Setting up for operation is completed in only a few minutes.

The **JOCKEY J3/5** is a tool of **high mechanical efficiency**, only withstands the severest conditions of use and only requires **periodic lubrication for maintenance.**

## CARACTERISTIQUES

Model	WLL	Weight (kg)	Diameter rope Jockey - 10 m (mm)	Effort on lever at nominal load (kg)	Dimensions L x l x p (mm)
Jockey J3	300 kg	1,750	4,5	±12	320 x 200 x 40
Jockey J5	500 kg	3,750	6,5	20	370 x 215 x 55

\* Rope stroke per double way operation of the lever : 25 mm, rope breaking strength : 3100 kg

\*\* Length of operating lever : 495 mm

**Jockey J5 is available in two versions :**

- with a **10 m rope, two anchoring slings** (2 m + 2 m)
- with a **20 m rope, two anchoring slings** (2 m + 2 m) and a **pulley-block** to double the unit's capacity.